



**METAL SHARK**  
METALSHARKBOATS.COM

# 55 DEFIANT





METAL SHARK  
METALSHARKBOATS.COM

# 55 DEFIANT



*Metal Shark 55' Defiant (shown here in Multipurpose Port Security / Fire Rescue configuration with available Fire Pump Package and multiple monitors)*

**The Metal Shark 55' Defiant** is a welded aluminum monohull pilothouse patrol vessel specially designed for use as a law enforcement, port security, and fire rescue response boat. Like all Metal Sharks, it may be fully customized to meet virtually any mission requirement. The vessel shown on these pages has been specially configured for use as a multipurpose port security vessel with fire fighting and Chemical, Biological, Radiological, Nuclear and high-yield Explosive (CBRNE) response capability. Regardless of configuration and equipment, the 55' Defiant serves as an extremely stable, dependable, and highly capable platform that is well suited for both inland and offshore use.



METAL SHARK  
METALSHARKBOATS.COM

# 55 DEFIANT



**Hull Design:** The 55' Defiant features a proven Metal Shark hull design that has been engineered and built to precise tolerances. To achieve its superior hull life rating of 30+ years, the hull is composed entirely of heavy, welded plates of premium-grade 5086 aluminum alloy. Thanks to its wide beam and pronounced reverse chines, the 55' Defiant is extremely stable. Twin diesel water jets, straight shaft inboards, and pod propulsion systems are available.



METAL SHARK  
METALSHARKBOATS.COM

# 55 DEFIANT



**Deck Layout:** At the heart of the 55' Defiant's crew-friendly design is its spacious, clutter-free deck arrangement that allows for easy, surefooted passage from bow to stern. Wide, non-skid walkways feature low-level LED lighting for night missions, and careful consideration has been given to the placement of all rails and grab handles. A durable heavy duty trapezoidal rubber rub rail (shown), or available urethane-sheathed foam collar provides impact resistance during alongside maneuvers; while port and starboard dive recesses and the full-width swim platform facilitate access to and from the water or other vessels.



METAL SHARK  
METALSHARKBOATS.COM

55 DEFIANT



**Pilothouse:** The most immediately apparent advancement in Metal Shark's Defiant pilothouse design is the use of pillarless glass to substantially enhance visibility. The result is a near elimination of the dangerous blind spots that are an unfortunate drawback of conventional pilothouse vessels. Further, the 55' Defiant's quickly opening side and aft pilothouse doors offer added flexibility and greatly facilitate communication when docking or maneuvering alongside another vessel.



METAL SHARK  
METALSHARKBOATS.COM

# 55 DEFIANT



**Helm:** The 55' Defiant boasts a wide-open helm layout that puts all controls at the operator's fingertips, with ample space for mounting multiple navigation components. The 55' Defiant may be equipped with joystick controls for dockside maneuvering, as shown here.



METAL SHARK  
METALSHARKBOATS.COM

55 DEFIANT



**Pilothouse Layout:** The 55 Defiant's roomy pilothouse may be configured with multiple seating options, including shock mitigating seats. Shown here is a large bench seat which converts to two stretcher bunks for water ambulance use in emergency response situations.



METAL SHARK  
METALSHARKBOATS.COM

55 DEFIANT



**Crew Accommodations:** The 55' Defiant's fully customizable below-decks crew accommodations are accessed via a set of stairs in the pilothouse. The standard layout features an enclosed head on the starboard side, which includes a vacuum toilet, wash basin, and hot shower. A full galley with sink, microwave, and refrigerator has been located to port. Forward of the head and galley is a crew seating area with table and settee that can double as sleeping berths. Aft of the head is a spacious mid-cabin area that can be configured with twin bunks or utilized as multi-use space.





METAL SHARK  
METALSHARKBOATS.COM

55 DEFIANT



**Custom Capability:** Like all Metal Sharks, the 55' Defiant may be full customized to suit a wide array of mission requirements. The vessel is shown here with a full electronics package including forward-looking infrared (FLIR) camera and radar; and also a fire pump package with multiple RF-controlled monitors. Metal Shark is well versed in the proper outfitting of vessels with electronics, fire fighting equipment, positive-pressure CBRNE (chemical, biological, radiological, nuclear, and high-yield explosive) filtration systems, or any other mission-specific hardware.



METAL SHARK  
METALSHARKBOATS.COM

# 55 DEFIANT



**Custom Capability:** 55 Defiant shown here in multipurpose port security / fire rescue configuration. Multiple RF-controlled monitors provide maximum control in tactical firefighting situations, dual heavy-duty rubrails provide impact protection, and a massive forward pusher knee adds utility.



METAL SHARK  
METALSHARKBOATS.COM

# 55 DEFIANT



**Propulsion:** The 55 Defiant may be fitted with a wide range of propulsion systems, including diesel waterjets, straight shaft inboard diesels, and pod propulsion systems. The vessel shown here is equipped with twin Cat C-18 engines mated to Hamilton waterjets.



**METAL SHARK**  
METALSHARKBOATS.COM

# 55 DEFIANT

## SPECIFICATIONS:

Length Overall:	55' (16.7 meters)
Beam:	17' (5.2 meters)
Draft:	4' (1.2 meters)
Fuel Capacity:	600 Gallons (2,271 litres)
Max Speed:	30+ knots (sea state 1, full load)
Cruising Speed:	15-20 knots (full load)
Range:	360+ nm at cruising speed
Crew Capacity:	6+ persons
Total Capacity:	20 persons
Electrical System:	12V or 24V; 120V or 240V
Enclosure Noise:	Pilohouse: <84 dBA, Machinery Room: <115 dBA
Propulsion:	CAT, Cummins, Volvo and MTU options

## KEY FEATURES (Typical Vessel Setup):

Air Conditioning System  
Batteries: Optima Blue Top (4)  
Berths: Two  
Bilge Pumps: (3) 3700 GPH  
Bow Bit & (8) 10" Cleats  
Chart Table: Large, w/ Integrated Storage  
Collar: Solid Foam Wraparound (*Heavy Duty Trapezoidal Rubber Rail is Available As an Option*)  
Construction: Welded 5086 Aluminum Alloy  
Dash: Large, for Electronics and Controls  
Decks: Self-Bailing w/ Scuppers  
Dive Reliefs: Port & Starboard  
Electronics Mounting Pod: Overhead  
Fans: Overhead Circulation  
Fire Extinguishers: (4)  
Fuel/Water Separators: Racor (2)  
Defrosting System: Cabin  
Galley: With Sink, Stove, and Microwave  
Grab Rail Package  
Head Compartment: With Sink, Head & Shower  
Ladder, Removable  
Life Ring w/ Mount  
Lifting Eyes, Four-Way

## KEY FEATURES, CONTINUED:

Lighting: Accommodations Area  
Lighting: Courtesy LED Work Lights  
Lighting: Low-Level Walkway Illumination  
Lighting, Navigation  
Lockers: Bow/Anchor & Stern  
Non-Skid Decks & Gunnels  
Pilohouse: Fully enclosed, 360-degree visibility, overhead spotter windows  
Rescue Points: Stern, Port, and Starboard  
Radar Arch: Folding  
Seating: 4 shock mitigating, option for additional seating for 4-6 persons  
Settee w/ Table (converts to berth)  
Shore Power w/ Charger & Cord  
Steering Helm, Tilt Hydraulic  
Tow Post / Gun Mount: Forward  
Windows & Doors: Diamond SeaGlaze  
Wipers: Self-Parking  
Zinc Anodes, Hull

## COLLAR & HULL FENDERING SYSTEM:

Heavy-Duty Sheath-Wrapped Foam Collar  
Bolt Rope Style Attachment System  
Black rub strake  
Anti-fouling paint preparation behind collar  
Custom color choices & UV coating protection  
Integrated dive relief cutouts  
(Heavy Duty Trapezoidal Rubber Rub Rail also available)

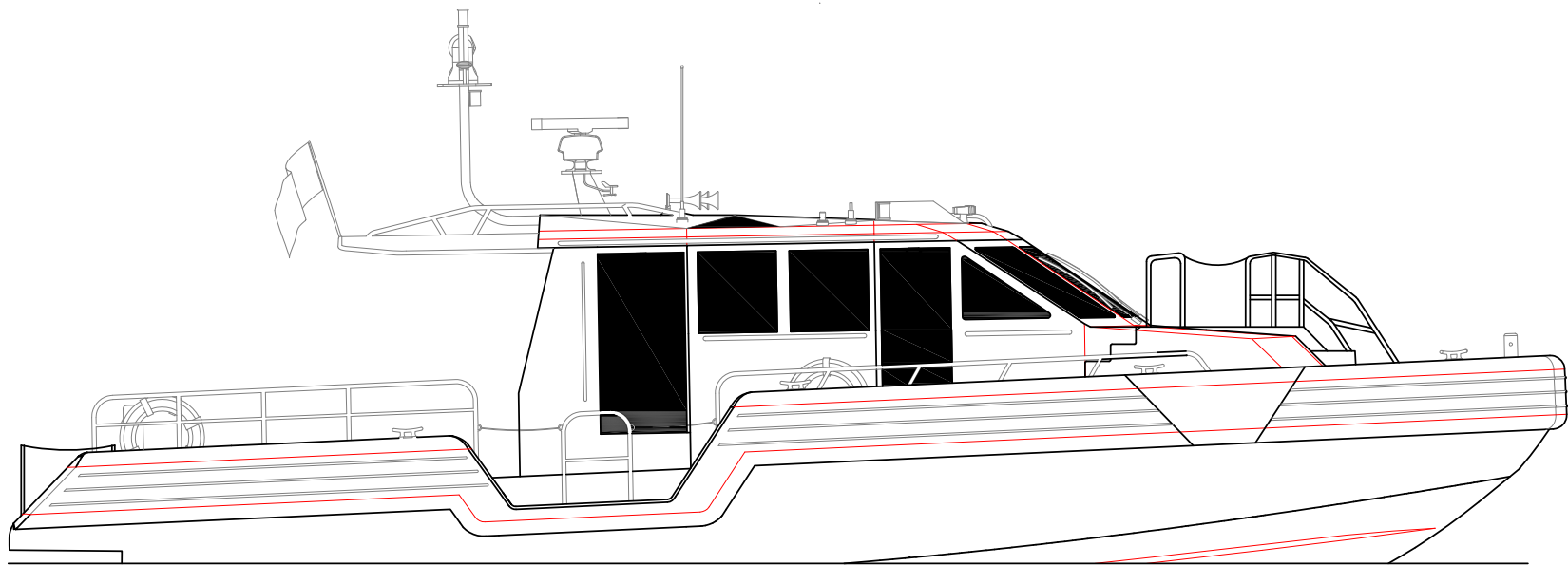
## POWER & PROPULSION NOTES:

*Available power includes twin CAT, Cummins, Volvo and MTU options. Propulsion can be in the form of conventional shaft drive, waterjet or Pod propulsion. While waterjet propulsion offers speed and maneuverability advantages; the conventional straight shaft configuration offers lower acquisitions costs, maintenance costs, and is serviceable anywhere in the world with the most basic of tools and training. Depending on propulsion, cruising speed averages 30 knots with top speeds of 40+ knots. A 600-gallon fuel tank provides a range of over 360 miles; even greater range is possible*



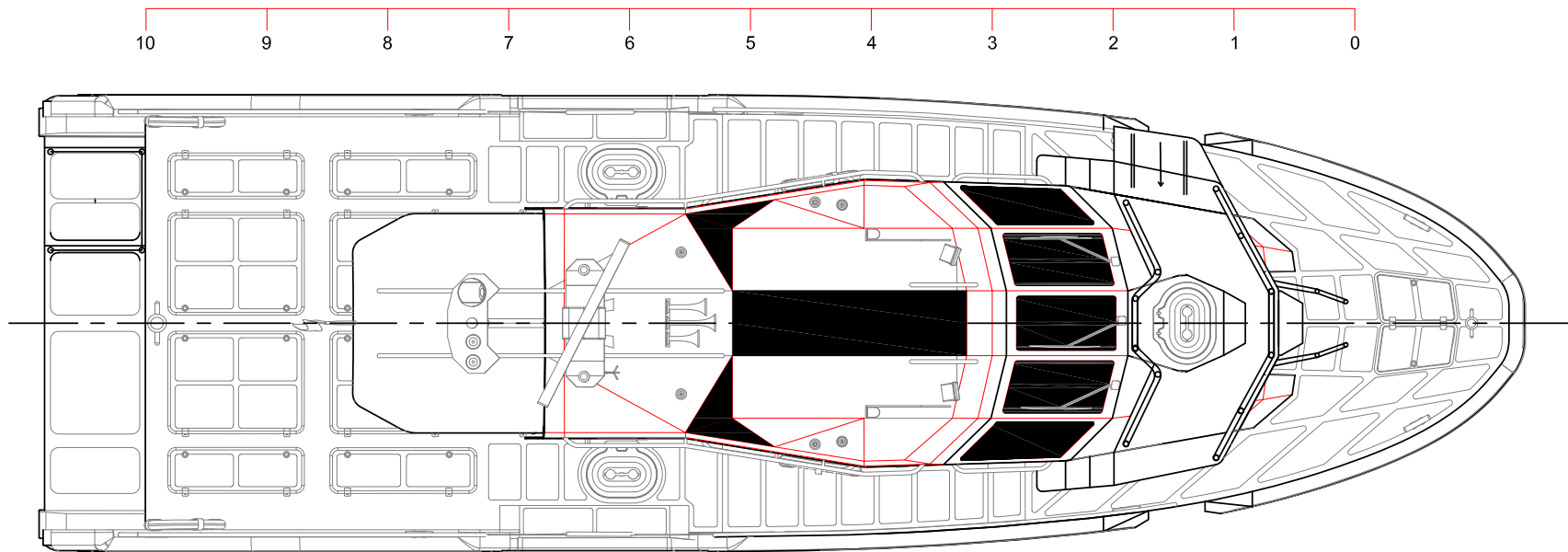
METAL SHARK  
METALSHARKBOATS.COM

# 55 DEFIANT



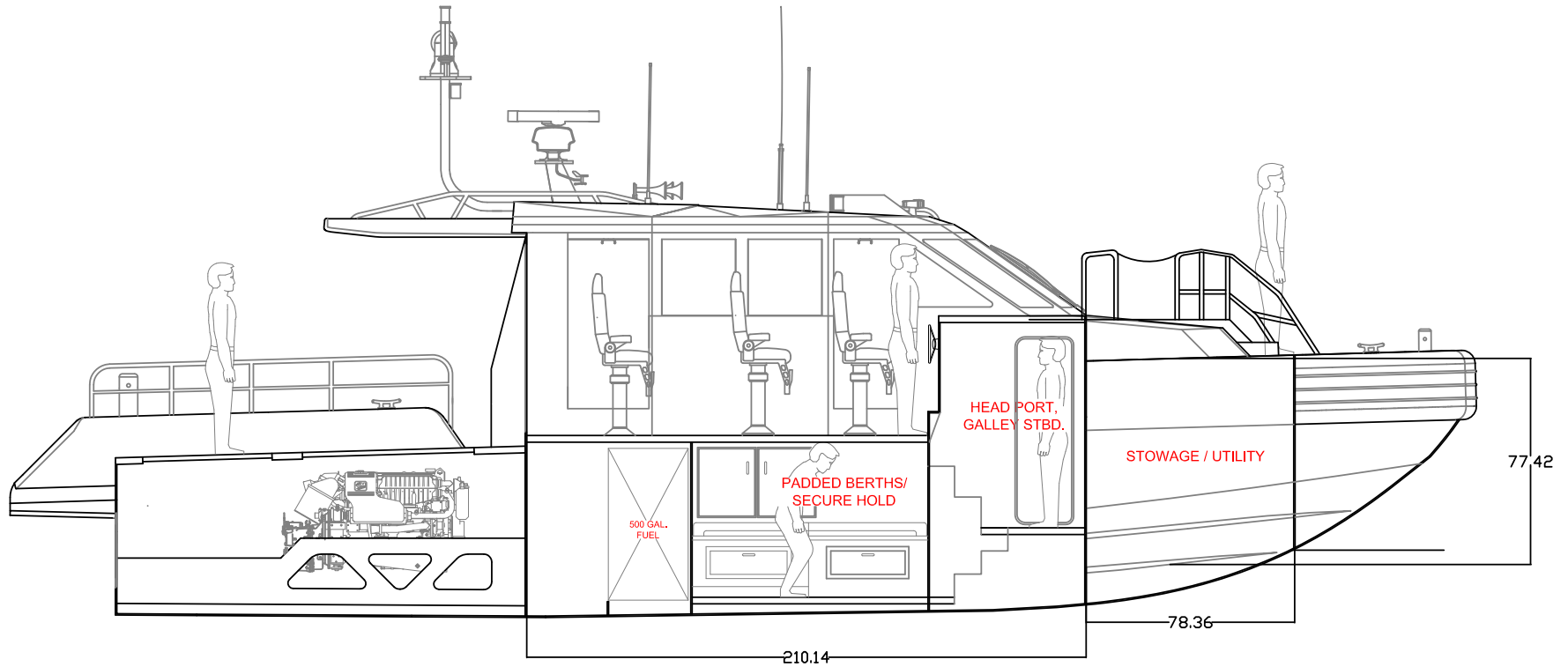
Profile

***55 Defiant General Arrangement***



Deck Plan

## *55 Defiant General Arrangement*



Centerline Longitudinal Section

**55 Defiant General Arrangement**



**METAL SHARK**  
METALSHARKBOATS.COM

# 55 DEFIANT



**METAL SHARK**  
METALSHARKBOATS.COM

**PHONE:** 337.364.0777

**FAX:** 337.364.0337

**EMAIL:** [sales@metalsharkboats.com](mailto:sales@metalsharkboats.com)

**WEB:** [www.metalsharkboats.com](http://www.metalsharkboats.com)